

Diagnostic accuracy of different bronchoscopic specimens in sputum Xpert MBT/RIF- negative pulmonary TB patients

Omaima Ibrahim Badr,^{1,2} Wael Aly Elrefaey,² Mohammed Shabrawishi,² Hamza M. Assaggaf,³ Faisal Minshawi³

¹Department of Chest Medicine, Mansoura University, Faculty of Medicine, Mansoura, Egypt

²Department of Pulmonary Medicine, Al-Noor Specialist Hospital, Mecca, Saudi Arabia

³Department of Laboratory Medicine, Faculty of Applied Medical Sciences, Umm Al-Qura University, Mecca, Saudi Arabia

The study was conducted at the Al-Noor specialist tertiary hospital in Mecca, Saudi Arabia.

ABSTRACT

Background: Tuberculosis (TB) control remains a critical public health problem worldwide. Rapid diagnosis and proper treatment are beneficial for the effective control of tuberculosis transmission. Diagnostic challenges arise when a patient has a clinical and radiological suspicion of tuberculosis but cannot produce sputum, sputum acid-fast bacilli, or Xpert *Mycobacterium tuberculosis*/rifampicin (Xpert MTB/RIF) is negative, resulting in suboptimal management. As a result, more invasive techniques must be used on these patients to establish the diagnosis.

Methods: A retrospective study recruited 330 suspected pulmonary TB patients with negative sputum of Xpert MBT/RIF who underwent bronchoscopy between March 2018 and December 2021. The diagnostic yields of bronchoalveolar lavage fluid (acid-fast bacilli, Xpert MTB/RIF, and culture) and histopathologic examination (HPE) were calculated and compared to the final diagnosis and culture as a gold standard.

Results: Out of 330 suspected pulmonary TB patients, 181 had a final diagnosis of TB, and 149 had non-TB. The sensitivity of BALF (culture, Xpert, acid-fast bacilli) and trans-bronchial lung biopsy (HPE) was 80.7%, 72.9%, 21.1%, and 87.1%, respectively. Multiple nodules were associated with significantly higher BALF Xpert MTB, bronchoalveolar lavage fluid culture, and trans-bronchial lung biopsy (HPE) positivity.

Conclusions: Bronchoscopic specimens are essential for accurate and rapid diagnosis of sputum Xpert MBT/RIF negative patients with high clinical and radiological suspicion of tuberculosis.

Key words: Tuberculosis; bronchoscopy; bronchoalveolar lavage; Xpert MBT/RIF; trans-bronchial lung biopsy.

Correspondence: Omaima Ibrahim Badr, Department of Pulmonary Medicine, Al-Noor Specialist Hospital, 3rd Ring Rd, An Naseem, Mecca 24241, Saudi Arabia. Tel. +966.552109100. E-mail: omaimaibrahim@mans.edu.eg

Contributions: OIB, WAE, conceptualization, data curation, investigation, methodology; HMA, FM, formal analysis; OIB, FM, project administration; OIB, MS, WAE, resources; OIB, WAE, FM, supervision, validation; OIB, WAE, FM, MS, original manuscript drafting, review and editing: All the authors have read and approved the final version of the manuscript and agreed to be accountable for all aspects of the work.

Conflict of interest: The authors declare that they have no competing interests, and all authors confirm accuracy.

Ethics Approval: The study was approved by Saudi Arabia's Ministry of Health's Institutional Ethics Committee No. H-02-K-076-1021-589.

Availability of data and materials: The datasets that support the findings of this study are available upon reasonable request from the corresponding author.

Funding: There was no external funding for this study.

Introduction

Despite significant efforts to control tuberculosis (TB), the disease remains one of the most common infectious diseases worldwide. According to a World Health Organization (WHO) report, estimated 10 million new cases of tuberculosis and 1.6 million deaths from tuberculosis occurred in 2018 [1]. According to the WHO, Saudi Arabia has a tuberculosis incidence rate of 12 (10-14) per 100,000 people, making the country a moderately burdened country for tuberculosis infection [2]. The Mecca region, on the other hand, has roughly twice the national TB incidence rate (24/100,000). This is most likely due to the region's annual influx of millions of Hajj and Umrah pilgrims [3,4].

Globally, tuberculosis control remains a critical public health issue, particularly in light of the emergence of drug-resistant disease. For effective TB transmission management, prompt diagnosis and treatment are essential [5].

The most commonly used test for TB detection is microscopic smear examination using Ziehl-Nelson (ZN) staining techniques. However, it is not efficient to identify TB in most patients. The sensitivity of sputum smear microscopy by the ZN method is low, ranging from 20% to 80%, and is dependent on the type of specimens collected, as well as the experience of preparing, staining, and examining the smear [6]. As a result, many TB patients are smear-negative and can spread the infection [7]. Smear-negative TB cases are typically 20-25% more contagious than smear-positive cases, and they account for 13-20% of transmissions [5-7]. However, after incorporating molecular (DNA) fingerprint clustering to conventional studies, Alsadi *et al.* found that the actual contribution of smear negative index case patients to tuberculosis transmission is 50% less than previously assumed. [8]. The gold standard for TB diagnosis and resistance is positive culture-based drug susceptibility testing [9]. Still, it is time-consuming (6-8 weeks), which has a detrimental influence on the spread of drug-resistant tuberculosis in the community and might result in increased mortality and morbidity [10]. Therefore, in 2011 the WHO recommended Xpert MTB/RIF (Cepheid, Sunnyvale, CA, USA) as a quick, automated, cartridge-based molecular test for the early detection of probable tuberculosis cases. In less than 2 hours, the test detects *Mycobacterium tuberculosis* DNA and the primary mutations that induce rifampicin resistance [11]. Consequently, the WHO recommended the next-generation cartridge, Xpert MTB/RIF Ultra (Xpert Ultra), in March 2017. It is anticipated to improve the diagnosis of TB and rifampicin resistance [12]. Also, there have been some recent publications on the use of real time PCR, droplet digital PCR technology and Xpert MTB/MDR/XDR to identify MTB pathogens and drug resistance [13]. Therefore, WHO recognized the Xpert MTB/RIF assay in January 2020 [14]. It has demonstrated high diagnostic accuracy and improved patient outcomes when used as an initial test for identifying tuberculosis and rifampicin-resistant infections [5]. Patients with clinical, microbiological, and/or radiographic evidence of pulmonary tuberculosis are deemed to have active tuberculosis [15]. If the sputum acid-fast bacillus (AFB) and molecular test results are all negative, abnormal imaging results indicating pulmonary tuberculosis may be critical. In addition, computed tomography (CT) findings associated with sputum negative Xpert MTB/RIF might be helpful in TB diagnosis. A previous study evaluated CT results of pulmonary TB between sputum Xpert MTB/RIF negative and positive patients and found that chest CT finding interpretation could help with early identification and management of negative Xpert MTB/RIF- pulmonary TB [5].

Diagnostic challenges arise when a patient has a clinical and radiological suspicion of tuberculosis but cannot produce sputum,

or has sputum (AFB and/or Xpert MTB/RIF) negative smears, resulting in suboptimal management. As a result, other non-invasive methods for detecting AFB in gastric wash or stool can be used. However, if sputum AFB and Xpert MTB/RIF smears are negative, more invasive techniques must be used to establish the diagnosis. For example, respiratory samples can be collected using a fiberoptic bronchoscope. Bronchoalveolar lavage (BAL), bronchial washing, and transbronchial lung biopsy (TBLB) are the three main used bronchoscopy-based procedures to obtain appropriate specimens [16].

There is little information and research on the role of bronchoscopy-based procedures in diagnosing sputum gene Xpert MBT/RIF negative probable TB patients. The purpose of this study is to evaluate the yield of bronchoscopy samples, such as bronchoalveolar lavage fluid (BALF) for AFB, Xpert MTB/RIF and culture, and transbronchial biopsies (histopathology examination, HPE) for diagnosis of TB patients with sputum Xpert MBT/RIF negative smear.

Methods

Study design

This is a single-centre, retrospective study. Between March 2018 and December 2021, we collected data for suspected pulmonary tuberculosis patients who were admitted to Al-Noor Specialist Hospital in Mecca with negative sputum AFB and Xpert MBT/RIF smears and underwent fiberoptic bronchoscopy to confirm the diagnosis. Al-Noor Specialist Hospital in Mecca is a specialist and teaching hospital with a 500-bed capacity located in the centre of holy city of Mecca. It is part of the Ministry of Health's services and provides tertiary care throughout Saudi Arabia's Mecca region [17,18]. The study was approved by Saudi Arabia's Ministry of Health's Institutional Ethics Committee (No. H-02-K-076-1021-589).

Study population

Three hundred and forty-seven patients (347) with suspected pulmonary tuberculosis were referred to the Bronchoscopy Unit from Inpatient Departments or Outpatient Clinics with three consecutive sputum AFB and Xpert MBT/RIF negative smears. The patients had at least two symptoms of TB and radiologic findings compatible with tuberculosis on their chest radiograph (CXR) or CT chest. In addition, an experienced chest physician clinically evaluated patients. Three hundred thirty patients were included. Patients under the age of 15, who had confirmed non-tuberculous mycobacteria results or who had started empirical anti-TB drugs for ≥ 2 weeks before bronchoscopy were excluded from this study.

The data were obtained from the medical database of the hospital including patients' demographics (age, gender, comorbidities, and previous TB history), clinical symptoms (fever, cough for at least weeks, haemoptysis, chest pain, shortness of breath, anorexia, weight loss, and night sweats), radiological finding (CXR and/or CT chest), laboratory results (BALF AFB, BALF Xpert MTB/RIF, and BALF Mycobacterial culture) and histopathology results of the biopsy samples (Figure 1).

Specimen collection

An Olympus electronic bronchoscopy system (1T260, Tokyo, Japan) was used for all patients under conscious sedation using midazolam/fentanyl. The clinical investigators performed the bronchoscope after giving each patient a brief explanation of the procedure and obtaining written consent. The bronchoscope was passed through the nose or mouth into the airway, followed by installing

sterile saline (0.9%) aliquots into the airway of the affected lung segment determined by CXR or CT chest. The volume of the saline was about 60-120 ml. The BALF was collected in sterile collection traps connected to a vacuum suction device. BALF samples were examined for gram stain, cultures (bacterial and fungal), cytology, and cell differential to exclude other alternative diagnoses. A trans-bronchial biopsy was obtained if technically possible and suitable for the clinical investigations of that patient. The number of biopsies was usually 4-6 biopsies using alligator forceps.

AFB smear microscopy

BALF smears were stained with fast Auramine O fluorescent dye for microscopy detection of AFB [19].

Mycobacterial TB culture and drug sensitivity

The BACTEC MGIT 960 rapid system (Becton Dickinson, Oxford, UK) was used to cultivate MTB from BALF specimens. The drug sensitivity was routinely evaluated using the BACTEC MGIT 960 SIRE kit (Becton Dickinson) if positive MTB culture. The specimens were tested for resistance to the first-line anti-TB medications, including RIF, isoniazid, ethambutol, and pyrazinamide [20].

Xpert MTB/RIF

According to the manufacturer's recommendations, the Gene Xpert device (Cepheid) was used to identify MTB in BALF smears

and mutations that detect rifampicin resistance using separate primers and different molecular probes that attack the 81-bp core region of the Mycobacterial RNA polymerase (*rpoB*) gene [21].

Trans-bronchial lung biopsy

TBLB specimens were sent for histological examination. Histopathology was considered matched with TB if caseating or necrotizing granulomas were detected.

Case definition for final diagnosis of TB

Pulmonary tuberculosis cases are either: bacteriologically confirmed (by positive specimen for *M. tuberculosis* by Ziehl-Nelson staining, Xpert MTB/RIF, or culture) or clinically diagnosed (without bacteriologic confirmation for MTB) built on clinical and radiologic suspicion after excluding alternative diagnoses with clinical and radiological response to empirical anti-TB therapy (ATT). Patients were evaluated every two months for six months to assess their response to ATT. In addition, all sputum AFB and Xpert MBT/RIF negative cases with suspected pulmonary tuberculosis (clinical and radiological) underwent fibreoptic bronchoscopy to confirm the diagnosis.

Statistical analysis

Demographic and clinical data were expressed as the frequency with percentage and mean±SD. The sensitivity, specificity, pos-

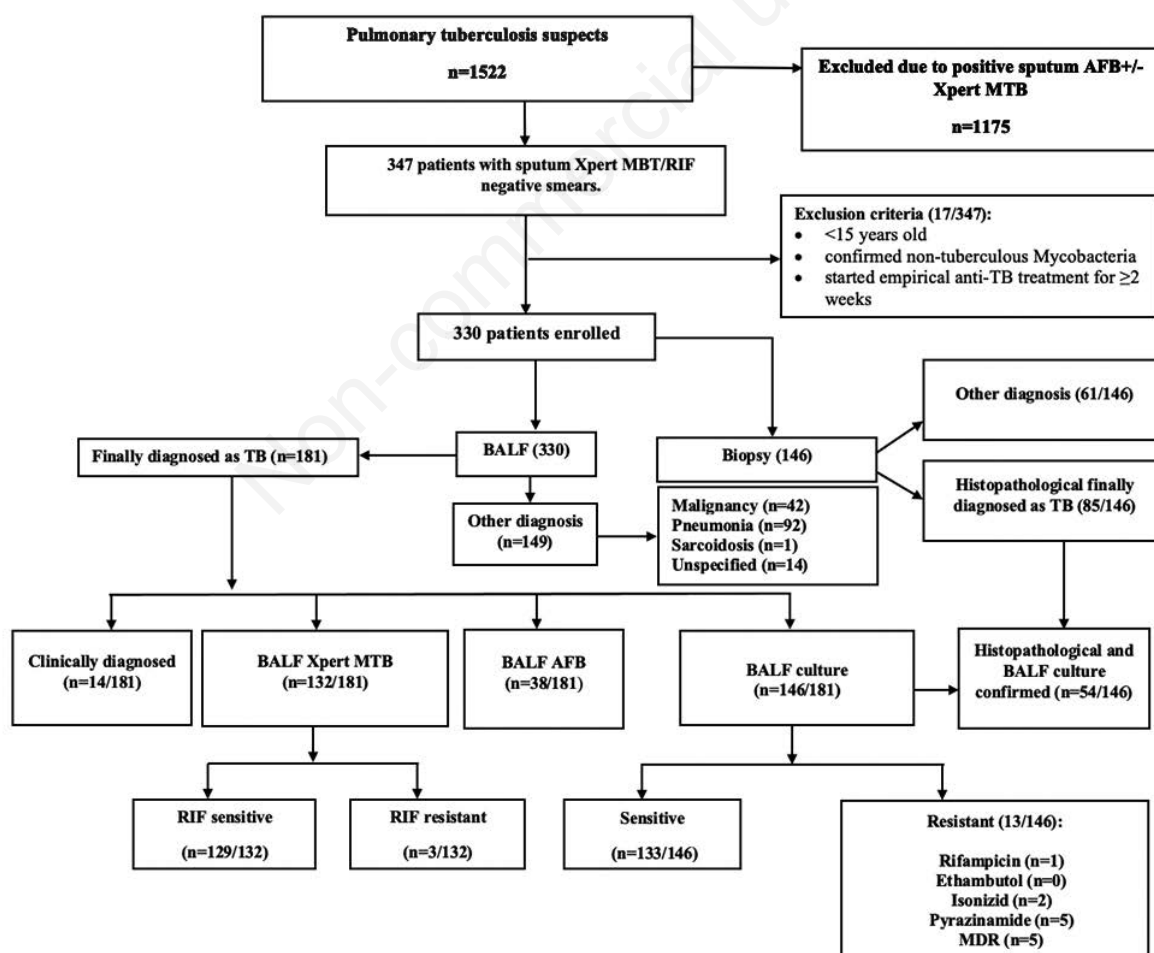


Figure 1. Flow chart of the studied patients.

itive predictive values (PPV), and negative predictive values (NPV) for BALF culture's diagnostic methods and performance were calculated for BALF AFB, Xpert MTB/RIF, and TBLB HPE and compared with chi-square. The IBM (SPSS v. 25 SPSS Inc. Chicago, IL, USA) software was utilized for the statistical analysis. A $p \leq 0.05$ was considered statistically significant.

Results

Clinical characteristics of patients with sputum Xpert MBT/RIF negative smears

Three hundred and thirty patients (330) were enrolled in this study. There were 229 males and 101 females, with a mean age of 51 ± 18 years; 39.7% were smokers. The most common symptoms were cough 233 (70.6%) and fever 193 (58.5%). The distribution of other symptoms is summarized in Table 1. On the other hand, 49 (14.8%) patients had a previous history of TB, and 9 (2.7%) patients were HIV positive. The most common chest x-ray (CXR) finding was consolidation in 182 (55%) patients, while normal CXR was observed in 27 (8.2%). Consolidation was also the most common computed tomography (CT) chest finding in 141 (42%) patients, while mediastinal lymphadenopathy was the least common finding in 2 (0.6%) patients (Table 1).

Diagnostic efficacy of the BALF specimens in patients with sputum Xpert MBT/RIF negative smears

When culture was used as the gold standard, BALF Xpert MBT/RIF showed 89.7% sensitivity and 99.5% specificity. On the other hand, BALF AFB showed 26% sensitivity and 100% specificity. When the final diagnosis was used as the reference standard, BALF culture showed 80.7% sensitivity and 100% specificity. BALF Xpert MBT/RIF showed 72.9% sensitivity and 100% specificity. BALF AFB showed 21.1% sensitivity, 100% specificity ($\chi^2 = 35.3$, $p \leq 0.05$) (Table 2). The AFB and Xpert MTB/RIF assays in BALF were consistent with MTB culture in BALF. To analyse this indication of how the BALF AFB and BALF Xpert MTB correspond with BALF Culture, we assessed the degrees of reliability. Our result showed the level of agreement of BALF AFB is 28%, and BALF Xpert MTB/RIF is 91%. Overall, these results revealed that the BALF MTB culture and the Xpert MTB/RIF showed high reliability for TB patients' diagnostic performance (Table 3).

The diagnostic efficacy of TBLB HPE specimens in patients with sputum Xpert MBT/RIF negative smears

One hundred and forty-six (146) patients out of 330 underwent TBLB. We investigated the sensitivity and specificity of TBLB

specimens to diagnose TB patients compared with culture as the gold standard and final diagnosis. TBLB HPE showed 84.4% sensitivity and 75.6% specificity compared with bacterial isolation from bronchial lavage. On the other hand, when TBLB is compared with the final diagnosis, the sensitivity and specificity increase (87.1% and 100%, respectively) (Table 4). Moreover, our data showed that the level of agreement between TBLB and BALF culture was 59% (Table 5).

Table 1. Baseline characteristics of the patients (n=330).

Variables	N	%
Demographics		
Age	51±18.4	
BMI	25.4±4.3	
Sex (male)	229	69.4
Smoking (yes)	131	39.7
Old tuberculosis history	49	14.8
Signs and symptoms		
Fever (yes)	193	58.5
Coughing (yes)	233	70.6
Haemoptysis (yes)	101	30.6
Loss of weight (yes)	155	46.9
Night sweating (yes)	100	30.3
Chest pain (yes)	67	20.3
Dyspnoea (yes)	80	24.2
Comorbidities		
Diabetes (yes)	61	18.5
Chronic pulmonary disease (yes)	16	4.8
HIV (yes)	9	2.7
CRF	14	4.2
CXR finding		
Consolidation	182	55.2
Cavitary lesions	49	14.8
Nodular	46	13.9
Effusion	26	7.9
Normal	27	8.2
CT finding		
Consolidation	141	42.7
Centrilobular nodules / tree in bud	67	20.3
Cavitary lesions	39	11.8
Multiple nodules	56	17
Pleural effusion	10	3
Mediastinal lymphadenopathy	2	0.6
Lobar collapse	15	4.5

BMI, body mass index; HIV, human immunodeficiency virus; CRF, chronic renal failure; CXR, chest X-ray; CT, computed tomography.

Table 2. Diagnostic efficacy of the BALF specimens in patients with sputum Xpert MBT/RIF negative smears.

	Sensitivity* % (n) 95% CI	Specificity % (n) 95% CI	PPV % (n) 95% CI	NPV* % (n) 95% CI	χ^2	p
Compared to culture						
BALF AFB	26 (38/146)	100 (184/184)	100 (38/38)	63 (184/292)	54.14	<0.001*
BALF Xpert MTB	89.7 (131/146)	99.5 (183/184)	99.2 (131/132)	92.4 (183/198)	270.7	<0.001*
Compared to final diagnosis						
BALF culture	80.7 (146/181)	100 (149/149)	100 (146/146)	81 (149/184)	215	<0.001*
BALF AFB	21.1 (38/181)	100 (149/149)	100 (38/38)	51 (149/292)	35.3	<0.001*
BALF Xpert MTB	72.9 (132/181)	100 (149/149)	100 (132/132)	75.3 (149/198)	181.1	<0.001*

BALF, bronchoalveolar lavage fluid; AFB, acid-fast bacilli; Xpert MTB, mycobacterial tuberculosis; CI, confidence interval; PPV, positive predictive value; NPV, negative predictive value; * $p \leq 0.05$.

The relationships between various bronchoscopic specimens and radiological findings

Among 38 patients with positive BALF AFB, of whom 42.1% were diagnosed radiologically as consolidation, 28.9% were diagnosed as centrilobular nodules/tree-in-bud and cavitory lesions. However, none of the patients with positive BALF-AFB were diagnosed as multiple nodules, pleural effusion/mediastinal lymph node, or lobar collapse, with a statistically significant difference ($p<0.001$). Regarding BALF Xpert MTB: among 132 patients with positive BALF Xpert MTB, 38.6% were diagnosed radiologically as consolidation, 32.6% were diagnosed as centrilobular

nodules/tree-in-bud, 18.9% as cavitory lesions, and 5.3% as multiple nodules, with a statistically significant difference ($p<0.001$). Regarding BALF culture: Among 146 patients with positive BALF culture, 39.0% were diagnosed radiologically as consolidation, 32.9% were diagnosed as centrilobular nodules/tree-in-bud, 17.8% as cavitory lesions, and 5.5% as multiple nodules, with a statistically significant difference ($p<0.001$). Regarding TBLB: among 74 patients diagnosed with tuberculosis by TBLB, 29.7% were diagnosed radiologically as consolidation, 45.9% were diagnosed as centrilobular nodules/tree-in-bud, 10.8% as cavitory lesions, and 9.5% as multiple nodules with a statistically significant difference ($p<0.001$) (Table 6).

Table 3. Diagnostic consistency of the BALF specimens compared to the culture as the reference in patients with sputum Xpert MBT/RIF negative smears.

		BALF culture		Total	Kappa	p
		Positive	Negative			
BALF AFB	Positive	38	0	38	0.28	<0.001*
	Negative	108	184	292		
	Total	146	184	330		
		Positive	Negative	Total	Kappa	p
BALF Xpert MTB	Positive	131	1	132	0.91	<0.001*
	Negative	15	183	198		
	Total	146	184	330		

BALF, bronchoalveolar lavage fluid; AFB, acid-fast bacilli; Xpert MTB, mycobacterial tuberculosis; RIF, rifampin; * $p\leq 0.05$.

Table 4. The diagnostic efficacy of TBLB specimens in patients with sputum Xpert MBT/RIF negative smears.

	Sensitivity* % (n) 95% CI	Specificity % (n) 95% CI	PPV % (n) 95% CI	NPV* % (n) 95% CI	χ^2	p
Compared to culture TBLB (HPE)	84.4 (54/64)	75.6 (62/82)	73 (54/74)	86.1 (62/72)	51.8	<0.05*
Compared to final diagnosis TBLB (HPE)	87.1 (74/85)	100 (61/61)	100 (74/74)	84.7 (61/72)	107.7	<0.001*

TBLB, trans-bronchial lung biopsy; CI, confidence interval; PPV, positive predictive value; NPV, negative predictive value.

Table 5. Diagnostic efficacy of the TBLB specimens compared to the culture as a reference standard in patients with sputum Xpert MBT/RIF negative smears.

		BALF culture		Total	Kappa	p
		Positive	Negative			
TBLB (HPE)	Positive	54	20	74	0.59	<0.001*
	Negative	10	62	72		
	Total	64	82	146		

TBLB, trans-bronchial lung biopsy; HPE, histopathological examination; * $p\leq 0.05$.

Table 6. Relation between various bronchoscopic specimens and radiological finding.

Radiological findings	BALF AFB		BALF Xpert MTB		BALF culture		TBLB (HPE)	
	Positive (n=38)	p	Positive (n=132)	p	Positive (n=146)	p	Tuberculosis (n=74)	p
Consolidation	16 (42.1%)		51 (38.6%)		57 (39.0%)		22 (29.7%)	
Centrilobular nodules / tree-in-bud	11 (28.9%)		43 (32.6%)		48 (32.9%)		34 (45.9%)	
Cavitory lesions	11 (28.9%)		25 (18.9%)		26 (17.8%)		8 (10.8%)	
Multiple nodules	0 (0%)		7 (5.3%)		8 (5.5%)		7 (9.5%)	
Pleural effusion/mediastinal lymph node	0 (0%)		2 (1.5%)		3 (2.1%)		0 (0%)	
Lobar collapse	0 (0%)	<0.001	4 (3.0%)	<0.001	4 (2.7%)	<0.001	3 (4.1%)	<0.001

BALF, bronchoalveolar lavage fluid; AFB, acid-fast bacilli; Xpert MTB, mycobacterial tuberculosis; TBLB, trans-bronchial lung biopsy; HPE, histopathological examination.

Complications of TBLB

More than three-quarters of patients (80.1%) did not acquire complications during or after TBLB. Among 29 patients suffering from complications, the most commonly acquired complications were minor bleeding (15.1%), followed by pneumothorax (4.1%), and one patient suffered from major bleeding (0.7%) (Table 7).

Discussion

Bronchoscopy is well-known for diagnosing pulmonary TB in individuals who cannot give sputum or have a sputum AFB negative smear [22-27]. However, there is limited information on the diagnostic yield of bronchoscopic specimens among sputum negative Xpert MTB/RIF suspected TB patients. In this study, we investigated the diagnostic yield of fiberoptic bronchoscopy-based specimens, including BALF (AFB, Xpert MTB/RIF, and culture) and TBLB among suspected pulmonary TB patients with sputum Xpert MTB/RIF negative smears, which may lead to rapid diagnosis and proper treatment, reducing morbidity and mortality and improving the cure rate. The key findings of this study are that the diagnostic performance of transbronchial biopsy (HPE), BALF culture, and BALF Xpert MTB/RIF have high efficiency in diagnosing TB in Xpert MTB/RIF negative smears.

The clinical demographic data of 330 patients showed that cough was the most common symptom (70.6%), followed by fever (58.5%). These findings agreed with previous studies, which reported cough as the main presenting symptom (51.9%, 60%, 71.7%, and 72.2%) [26,28-30]. Moreover, consolidation was the most common finding in the CXR of the studied patients (55.2%), while normal CXR was the least common (8.2%). In a study by Dubey et al., consolidation was the most common finding (33.3%) and normal CXR (9.7%) [31]. Consolidation and centrilobular nodules/tree in bud were the most seen CT finding (42%, 20.3%, respectively), agreeing with Ko *et al.* [32] and Lee *et al.* [5], who reported consolidation was more frequently seen.

In this report, BALF mycobacterial culture is the most specific and sensitive method to detect TB among individuals who were finally diagnosed with tuberculosis. However, the disadvantage of BALF mycobacterial culture is that the detection window would take more than 14 days [33]. On the other hand, BALF Xpert is a rapid and sensitive method to detect TB in suspected patients. Our data showed a high-level agreement between BALF culture and BALF Xpert. This finding agrees with previous studies, which reported increased sensitivity of BALF Xpert (80%-81.3%-92.3%-94%-95.7%) [27,34-37]. Nevertheless, in this study, only one patient out of 132 positives BALF Xpert positive was culture-negative, despite having radiologic and clinical characteristics consistent with tuberculosis and responding to anti-TB drugs. In a previous investigation, 11 patients out of 24 Xpert positives were culture-negative [34]. This difference could be because of the distinct study design, which excluded patients who had been on empirical anti TB drugs for ≥ 2 weeks before bronchoscopy. On the other

hand, the sensitivity of the BALF AFB is low (21.1%). This result indicates that BALF AFB is better combined with Xpert and culture to increase the diagnostic yield further. A prior study in Eastern China found that the mixed detection results of BALF Xpert, culture, and AFB samples had higher diagnostic results than AFB samples and improved diagnostic yield for pulmonary tuberculosis [38].

Among the 146 patients confirmed to have TB by BALF culture, rifampicin-resistant was detected in one case (0.6%) among mono-resistant isolates, and five isolates were multidrug resistant tuberculosis (MDR-TB) cases (2.7%). A previous meta-analysis included 22 studies that looked at the drug resistance rates of TB in various parts of Saudi Arabia and showed that rifampicin resistance rates were 5.41% (4.21-6.61) and MDR was 6.7% (5.1-8.3) [39]. Furthermore, according to previous studies, the prevalence of MDR-TB in Saudi Arabia is low [40-43].

We obtained biopsy results to increase the yield of TB detection in suspected pulmonary TB patients with sputum Xpert MTB/RIF negative smears. Numerous studies found that TBLB sensitivity ranged from 16 to 77% [44]. However, the various TB diagnostic criteria (*i.e.*, histology, bacteriology, or both), lesion size, radiographic aspects of the lesions, and decreased number of clinical diagnoses may explain the vast heterogeneity in diagnosis accuracy [45,46]. Our data showed that TBLB (HPE) has 87.1% sensitivity compared to the final diagnosis. These results were coherent with a prior study that reported 81.9% sensitivity of HPE Cepheid. Our study has some limitations. First and foremost, although BALF samples were tested for Xpert MTB/RIF assays and cultures, this was a retrospective study. Second, it was a single-centre study. Third, new molecular techniques such as MTB/RIF Ultra, droplet digital PCR, and Xpert MTB/MDR/XDR were not tested. Finally, tissue samples were not tested for AFB, Xpert, or culture, and the TBLB (HPE) was not done for all suspected TB. Therefore, a prospective study should use systematized and parallel TBLB and BAL to evaluate the efficacy of various per-endoscopic respiratory samples.

Conclusions

For patients with Xpert negative sputum smears and a high clinical and radiologic likelihood of pulmonary tuberculosis, bronchoscopic specimens (BALF and TBLB) are highly reliable diagnostic procedures. Furthermore, in sputum Xpert negative patients who required bronchoscopy for pulmonary TB diagnosis, TBLB had the highest yield, followed by BALF culture and Xpert, with a high level of agreement between BALF culture and Xpert. However, TBLB is an invasive procedure that is not suitable for all patients. BALF mycobacterial culture is highly sensitive and specific for the diagnosis of smear-negative TB, but it is time-consuming, so BALF Xpert, which is a rapid and sensitive method to detect TB in suspected patients, has an advantage.

Abbreviations

AFB: acid-fast bacilli;
ATT: anti-tuberculosis therapy;
BAL: bronchoalveolar lavage;
BALF: bronchoalveolar lavage fluid;
BMI: body mass index;
CI: confidence interval;
CRF: chronic renal failure;

Table 7. Complications of trans-bronchial lung biopsy.

Complications	n (146)	%
No complications	117	80.1%
Minor bleeding	22	15.1%
Major bleeding	1	0.7%
Pneumothorax	6	4.1%

CT: computed tomography;
 CXR: chest radiography;
 HIV: human immunodeficiency virus;
 HPE: histopathologic examination;
 MBT: *Mycobacterial tuberculosis*;
 MDR: multidrug resistant;
 NPV: negative predictive values;
 PPV: positive predictive values;
 RIF: rifampicin;
 RpoB: RNA polymerase;
 TB: tuberculosis;
 TBLB: trans-bronchial lung biopsy;
 WHO: World Health Organization;
 ZN: Ziehl-Nelson.

References

- World Health Organization. Global tuberculosis report 2018. Available from: <https://apps.who.int/iris/handle/10665/274453>
- World Health Organization. Tuberculosis Country Profiles (Saudi Arabia). Accessed on: 2021 Apr 15. Available from: <https://www.who.int/tb/country/data/profiles/en/>
- Department of Statistics, Ministry of Health. Health statistical year book 2010. Riyadh Ministry of Health; 2012. Available from: <https://www.moh.gov.sa/en/Ministry/Statistics/book/Pages/default.aspx>
- Department of statistics, Ministry of Health. Health statistical year book 2000. Riyadh: Ministry of Health; 2002. Available from: <https://www.moh.gov.sa/en/Ministry/Statistics/book/Pages/default.aspx>
- Lee HN, Kim JI, Kim YH. Clinical and CT characteristics of Xpert MTB/RIF-negative pulmonary tuberculosis. *PLoS One* 2021;16:e0250616.
- Dzodanu EG, Afrifa J, Acheampong DO, Dadzie I. Diagnostic yield of fluorescence and Ziehl-Neelsen staining techniques in the diagnosis of pulmonary tuberculosis: A comparative study in a district health facility. *Tuberc Res Treat* 2019;2019:4091937
- Asadi L, Croxen M, Heffernan C, Dhillon M, Paulsen C, Egedahl ML, et al. How much do smear-negative patients really contribute to tuberculosis transmissions? Re-examining an old question with new tools. *EClinicalMedicine* 2022;43:101250.
- Pourostadi M M-Pill, Rashedi J MS, Mahdavi Poor B MS, Samadi Kafil H PhD, Hariri-Akbari M MS, Asgharzadeh M PhD. Frequency of smear-negative tuberculosis in Northwest Iran. *Iran J Med Sci* 2018;43:269-75.
- Shi J, Dong W, Ma Y, Liang Q, Shang Y, Wang F, et al. GeneXpert MTB/RIF outperforms mycobacterial culture in detecting mycobacterium tuberculosis from salivary sputum. *BioMed Res Int* 2018;2018:1514381.
- Machado D, Couto I, Viveiros M. Advances in the molecular diagnosis of tuberculosis: From probes to genomes. *Infect Genet Evol* 2019;72:93-112.
- World Health Organization. WHO meeting report for a technical expert consultation: no-inferiority analysis of Xpert MTB/RIF Ultra compared to Xpert MTB/RIF. Available from: <https://apps.who.int/iris/handle/10665/254792>
- Kim MJ, Nam YS, Cho SY, Park TS, Lee HJ. Comparison of the Xpert MTB/RIF assay and real-time PCR for the detection of *Mycobacterium tuberculosis*. *Ann Clin Lab Sci* 2015;45:327-32.
- Kohli M, Schiller I, Dendukuri N, Dheda K, Denkinger CM, Schumacher SG, et al. Xpert® MTB/RIF assay for extrapulmonary tuberculosis and rifampicin resistance. *Cochrane Database Syst Rev* 2018;8:CD012768.
- World Health Organization. Molecular assays intended as initial tests for the diagnosis of pulmonary and extrapulmonary TB and rifampicin resistance in adults and children: rapid communication. 2020. Available from: <https://apps.who.int/iris/handle/10665/330395>
- Nguyen MVH, Jenny-Avital ER, Burger S, Leibert EM, Achkar JM. Clinical and radiographic manifestations of sputum culture-negative pulmonary tuberculosis. *PLoS One* 2015;10:e0140003
- Zaglool DA, Khodari YA, Gazzaz ZJ, Dhafar KO, Shaker HA, Farooq MU. Prevalence of intestinal parasites among patients of Al-Noor Specialist Hospital, Makkah, Saudi Arabia. *Oman Med J* 2011;26:182-5.
- Ministry of Health. Al Noor Specialist Hospital. 2020. Available from: <http://nsh.med.sa/Pages/Home.aspx>
- Kim YW, Kwon BS, Lim SY, Lee YJ, Cho YJ, Yoon HI, et al. Diagnostic value of bronchoalveolar lavage and bronchial washing in sputum-scarce or smear-negative cases with suspected pulmonary tuberculosis: a randomized study. *Clin Microbiol Infect* 2020;26:911-6.
- Hendry C, Dionne K, Hedgepeth A, Carroll K, Parrish N. Evaluation of a rapid fluorescent staining method for detection of mycobacteria in clinical specimens. *J Clin Microbiol* 2009;47:1206-8
- He Y, Gong Z, Zhao X, Zhang D, Zhang Z. Comprehensive determination of *Mycobacterium tuberculosis* and Nontuberculous mycobacteria from targeted capture sequencing. *Front Cell Infect Microbiol* 2020;10:449.
- Sun Y, Zhang Q, Zhang Q, Liu C, Zhang H, Fu Y, et al. Diagnostic efficacy of Xpert MTB/RIF assay in bronchoalveolar lavage fluid for tracheobronchial tuberculosis: A retrospective analysis. *Front Med (Lausanne)* 2021;8:682107.
- Jacomelli M, Silva PR, Rodrigues AJ, Demarzo SE, Seicento M, Figueiredo VR. Bronchoscopy for the diagnosis of pulmonary tuberculosis in patients with negative sputum smear microscopy results. [Article in English, Portuguese]. *J Bras Pneumol* 2012;38:167-73.
- Altaf Bachh A, Gupta R, Haq I, Varudkar HG. Diagnosing sputum/smear-negative pulmonary tuberculosis: Does fibre-optic bronchoscopy play a significant role? *Lung India* 2010;27:58-62.
- Shin JA, Chang YS, Kim TH, Kim HJ, Ahn CM, Byun MK. Fiberoptic bronchoscopy for the rapid diagnosis of smear-negative pulmonary tuberculosis. *BMC Infect Dis* 2012;12:141.
- Charoenratanakul S, Dejsomritrutai W, Chairprasert A. Diagnostic role of fiberoptic bronchoscopy in suspected smear negative pulmonary tuberculosis. *Respir Med* 1995;89:621-3.
- Iyer VN, Joshi AY, Boyce TG, Brutinel MW, Scalcini MC, Wilson JW, et al. Bronchoscopy in suspected pulmonary TB with negative induced-sputum smear and MTD® Gen-probe testing. *Respir Med* 2011;105:1084-90.
- Lee HY, Seong MW, Park SS, Hwang SS, Lee J, Park YS, et al. Diagnostic accuracy of Xpert® MTB/RIF on bronchoscopy specimens in patients with suspected pulmonary tuberculosis. *Int J Tuberc Lung Dis* 2013;17:917-21.
- Shrestha P, Arjyal A, Caws M, Prajapati KG, Karkey A, Dongol S, et al. The application of GeneXpert MTB/RIF for smear-negative TB diagnosis as a fee-paying service at a South Asian General Hospital. *Tuberc Res Treat* 2015;2015:102430.
- Le Palud P, Cattoir V, Malbrun B, Magnier R, Campbell K, Oulkhour Y, et al. Retrospective observational study of diagnostic accuracy of the Xpert® MTB/RIF assay on fiberoptic bronchoscopy sampling for early diagnosis of smear-negative

- or sputum-scarce patients with suspected tuberculosis. *BMC Pulm Med* 2014;14:137.
30. World Health Organization. Treatment of tuberculosis: Guidelines for National Programs. 2003. Accessed on: 29 September 2020. Available from: https://apps.who.int/iris/bitstream/handle/10665/67890/WHO_CDS_TB_2003.313_eng.pdf?sequence=1
 31. Dubey S, Gaikwad N, Meshram S, Bagrecha M. Diagnostic yield of bronchoalveolar fluid/bronchoscopy among sputum AFB and CBNAAT negative presumptive tuberculosis patients: an observational study. *Int J Res Med Sci* 2021;9:546-51.
 32. Ko JM, Park HJ, Kim CH, Song SW. The relation between CT findings and sputum microbiology studies in active pulmonary tuberculosis. *Eur J Radiol* 2015;84:2339-44.
 33. Pfyffer GE, Wittwer F. Incubation time of mycobacterial cultures: how long is long enough to issue a final negative report to the clinician? *J Clin Microbiol* 2012;50:4188-9.
 34. Gowda NC, Ray A, Soneja M, Khanna A, Sinha S. Evaluation of Xpert®Mycobacterium tuberculosis/rifampin in sputum-smear negative and sputum-scarce patients with pulmonary tuberculosis using bronchoalveolar lavage fluid. *Lung India* 2018;35:295-300.
 35. Barnard DA, Iruken EM, Bruwer JW, Plekker D, Whitelaw AC, Deetlefs JD et al. The utility of Xpert MTB/RIF performed on bronchial washings obtained in patients with suspected pulmonary tuberculosis in a high prevalence setting. *BMC Pulm Med* 2015;15:103.
 36. Theron G, Peter J, Meldau R, Khalfey H, Gina P, Matinyena B, et al. Accuracy and impact of Xpert MTB/RIF for the diagnosis of smear-negative or sputum-scarce tuberculosis using bronchoalveolar lavage fluid. *Thorax* 2013;68:1043-51.
 37. Theron G, Peter J, Richardson M, Barnard M, Donegan S, Warren R, et al. The diagnostic accuracy of the GenoType® MTBDRsl assay for the detection of resistance to second-line anti-tuberculosis drugs. *Cochrane Database Syst Rev* 2014;(10):CD010705.
 38. Liu Q, Ji Y, Martinez L, Lu W, Shi X, Wang J, et al. Combined tests with Xpert MTB/RIF assay with bronchoalveolar lavage fluid increasing the diagnostic performance of smear-negative pulmonary tuberculosis in Eastern China. *Epidemiol Infect* 2020;149:e5.
 39. Al-Tawfiq JA, Hinedi K, Memish ZA. Systematic review of the prevalence of Mycobacterium tuberculosis resistance in Saudi Arabia. *J Chemother* 2015;27:378-82.
 40. Al-Tawfiq JA, Al-Muraikhy AA, Abed MS. Susceptibility pattern and epidemiology of Mycobacterium tuberculosis in a Saudi Arabian hospital: a 15-year study from 1989 to 2003. *Chest* 2005;128:3229-32.
 41. Kordy FN, Al-Thawadi S, Alrajhi AA. Drug resistance patterns of Mycobacterium tuberculosis in Riyadh, Saudi Arabia. *Int J Tuberc Lung Dis* 2004;8:1007-11.
 42. Yezli S, Memish ZA. Tuberculosis in Saudi Arabia: prevalence and antimicrobial resistance. *J Chemother* 2012;24:1-5.
 43. Alateah SM, Othman MW, Ahmed M, Al Amro MS, Al Sherbini N, Ajlan HH. A retrospective study of tuberculosis prevalence amongst patients attending a tertiary hospital in Riyadh, Saudi Arabia. *J Clin Tuberc Other Mycobact Dis* 2020;21:100185.
 44. Mondoni M, Repossi A, Carlucci P, Centanni S, Sotgiu G. Bronchoscopic techniques in the management of patients with tuberculosis. *Int J Infect Dis* 2017;64:27-37.
 45. Rajagopal TV, Isaac B, Christopher DJ, Thangakunam B, Gupta R, James P. The yield of bronchoscopy in sputum Xpert MTB/Rif negative tuberculosis in the Xpert era. *Eur Respir J* 2020;56:534.
 46. Zainudin BM, Wahab Sufarlan A, Rassip CN, Ruzana MA, Tay AM. The role of diagnostic fiberoptic bronchoscopy for rapid diagnosis of pulmonary tuberculosis. *Med J Malaysia* 1991;46:309-13.

Received for publication: 18 June 2022. Accepted for publication: 10 October 2022.

This work is licensed under a Creative Commons Attribution-NonCommercial 4.0 International License (CC BY-NC 4.0).

©Copyright: the Author(s), 2022

Licensee PAGEPress, Italy

Multidisciplinary Respiratory Medicine 2022; 17:872

doi:10.4081/mrm.2022.872

Publisher's note: All claims expressed in this article are solely those of the authors and do not necessarily represent those of their affiliated organizations, or those of the publisher, the editors and the reviewers. Any product that may be evaluated in this article or claim that may be made by its manufacturer is not guaranteed or endorsed by the publisher.